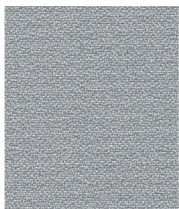




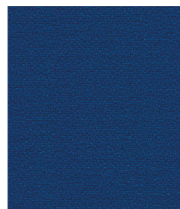
BONDAL BN06



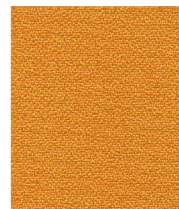
BONDAL BN04



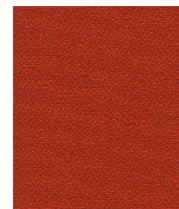
BONDAL BN05



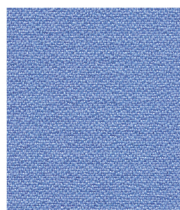
BONDAL BN03



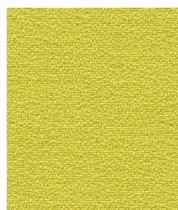
BONDAL BN02



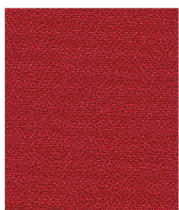
BONDAL BN01



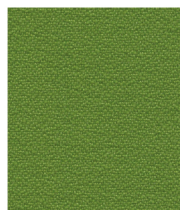
BONDAL BN12



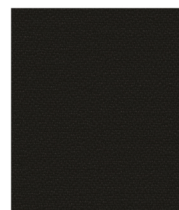
BONDAL BN13



BONDAL BN14



BONDAL BN15



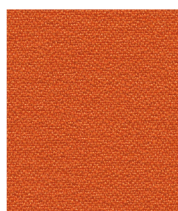
BONDAL BN07



BONDAL BN08



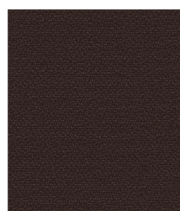
BONDAL BN18



BONDAL BN19



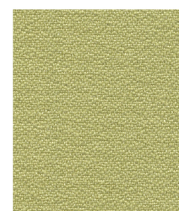
BONDAL BN20



BONDAL BN21



BONDAL BN16



BONDAL BN17



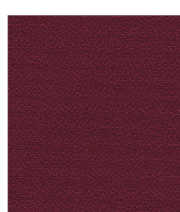
BONDAL BN25



BONDAL BN24



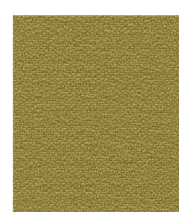
BONDAL BN23



BONDAL BN22



BONDAL BN31



BONDAL BN29

## BONDAL - SPECIFICATIES

Brandwerende Meubelstof - 100 % Polyester

### Samenstelling & specificaties

100 % Polyester

Gewicht per M2 [EN 12127]

350 g/m2

Slijtvastheid [ISO 12947-2]

150.000 Martindale

Lichtechtheid Xenon Arc Test [ISO 105-B02]

Classificering 5-8: Score 6

Wrijfvastheid Crockmeter [ISO 105-X12]

Classificering 4-5: Score 4/5

Pilling 2000 Rubs [ISO 12945-2]

Classificering 4-5: Score 5

Brandwerend

### Certificeringen

CLASS 1 IM [UNI 9175]

EN 1021-1&2: Sigaret + Lucifer

BS 5852-CRIB 5

BS 7176 MEDIUM HAZARD

NF D 60013 AM 18

Euroclass EN 13501-1

Californisch Technisch Bulletin 117:2013

OEKO-TEX

Schoonmaken & wassen

