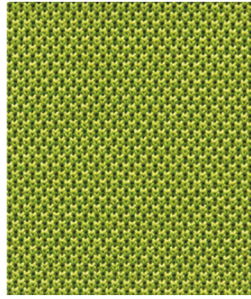




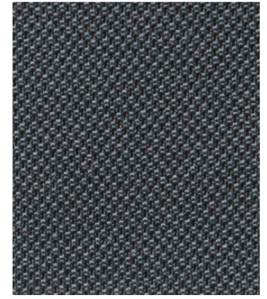
EMMA LY-01



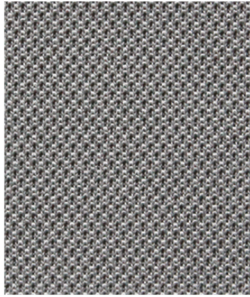
EMMA LY-03



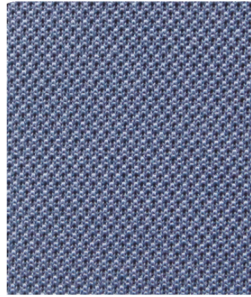
EMMA LY-04



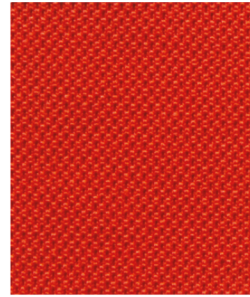
EMMA LY-02



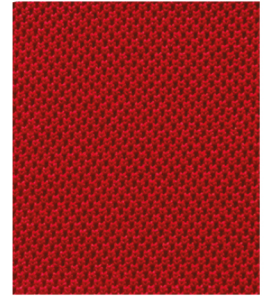
EMMA LY-05



EMMA LY-06



EMMA LY-07



EMMA LY-08

EMMA - SPECIFICATIES

Brandwerende Meubelstof - 100 % Polyester

Samenstelling rugleuning

100 % Polyester

Slijtvastheid

100.000 Martindale

Wrijfvastheid Crockmeter [AATCC 8 - 2016]

Classificering 4-5: Nat 4, Droog 4

Brandwerend

Lorem ipsum

Californisch Technisch Bulletin 117:2013

LY - Zitting

Samenstelling stof zitting

100 % Polyester

Slijtvastheid

100.000 Martindale

Wrijfvastheid Crockmeter [AATCC 8 - 2016]

Classificering 4-5: Nat 4, Droog 4

Water Afstotend

Classificering: 6

Olie Afstotend

Classificering: 6

Brandwerend